

PULASKI COUNTY SPECIAL SCHOOL DISTRICT: COMBINED POPULATION

Table 3M1: 3rd Grade Benchmark for Mathematics Spring 2011

	Below Scores	State Basic Score	State Basic Score	State Proficient Score	State Advanced Score	State Advanced Score	State Advanced Score	State Advanced Score	Not Proficient	State Score	Proficient Advanced	State Score
District	3%	2%	14%	12%	25%	25%	58%	60%	17%	14%	83%	85%
Arnold Drive	0%	2%	0%	12%	14%	25%	86%	60%	0%	14%	100%	85%
Baker	1%	2%	8%	12%	14%	25%	78%	60%	9%	14%	92%	85%
Bates	6%	2%	18%	12%	28%	25%	48%	60%	24%	14%	76%	85%
Bayou Meto	2%	2%	10%	12%	8%	25%	81%	60%	12%	14%	89%	85%
Cato	2%	2%	16%	12%	37%	25%	44%	60%	18%	14%	81%	85%
Chenal	3%	2%	11%	12%	20%	25%	65%	60%	14%	14%	85%	85%
Clinton	3%	2%	11%	12%	25%	25%	61%	60%	14%	14%	86%	85%
College Station	0%	2%	38%	12%	31%	25%	31%	60%	38%	14%	62%	85%
Crystal Hill	3%	2%	14%	12%	18%	25%	66%	60%	17%	14%	84%	85%
Dupree	12%	2%	12%	12%	20%	25%	56%	60%	24%	14%	76%	85%
Harris	17%	2%	44%	12%	27%	25%	12%	60%	61%	14%	39%	85%
Jacksonville	4%	2%	16%	12%	45%	25%	35%	60%	20%	14%	80%	85%
Landmark	0%	2%	12%	12%	17%	25%	71%	60%	12%	14%	88%	85%
Lawson	2%	2%	13%	12%	29%	25%	56%	60%	15%	14%	85%	85%
Oak Grove	0%	2%	11%	12%	16%	25%	73%	60%	11%	14%	89%	85%
Oakbrooke	1%	2%	20%	12%	13%	25%	66%	60%	21%	14%	79%	85%
Pine Forest	2%	2%	6%	12%	23%	25%	69%	60%	8%	14%	92%	85%
Pinewood	5%	2%	7%	12%	38%	25%	50%	60%	12%	14%	88%	85%
Robinson	2%	2%	12%	12%	34%	25%	51%	60%	14%	14%	85%	85%
Scott	10%	2%	31%	12%	38%	25%	21%	60%	41%	14%	59%	85%
Sherwood	0%	2%	12%	12%	34%	25%	53%	60%	12%	14%	87%	85%
Sylvan Hills	2%	2%	8%	12%	30%	25%	60%	60%	10%	14%	90%	85%
Taylor	0%	2%	12%	12%	33%	25%	55%	60%	12%	14%	88%	85%
Tolleson	0%	2%	8%	12%	30%	25%	62%	60%	8%	14%	92%	85%

Table 3M2: 3rd Grade Benchmark for Mathematics Spring 2010

	Below Scores	State Basic Score	State Basic Score	State Proficient Score	State Advanced Score	State Advanced Score	State Advanced Score	State Advanced Score	Not Proficient	State Score	Proficient Advanced	State Score
District	4%	3%	16%	13%	31%	28%	50%	55%	20%	16%	81%	83%
Arnold Drive	0%	3%	5%	13%	5%	28%	91%	55%	5%	16%	96%	83%
Baker	1%	3%	6%	13%	17%	28%	75%	55%	7%	16%	92%	83%
Bates	9%	3%	36%	13%	30%	28%	26%	55%	45%	16%	56%	83%
Bayou Meto	0%	3%	8%	13%	22%	28%	70%	55%	8%	16%	92%	83%
Cato	2%	3%	11%	13%	36%	28%	52%	55%	13%	16%	88%	83%
Chenal	0%	3%	5%	13%	21%	28%	74%	55%	5%	16%	95%	83%
Clinton	2%	3%	15%	13%	26%	28%	57%	55%	17%	16%	83%	83%
College Station	3%	3%	22%	13%	28%	28%	47%	55%	25%	16%	75%	83%
Crystal Hill	2%	3%	9%	13%	24%	28%	65%	55%	11%	16%	89%	83%
Dupree	0%	3%	4%	13%	44%	28%	52%	55%	4%	16%	96%	83%
Harris	9%	3%	44%	13%	34%	28%	13%	55%	53%	16%	47%	83%
Jacksonville	7%	3%	22%	13%	40%	28%	31%	55%	29%	16%	71%	83%
Landmark	4%	3%	14%	13%	27%	28%	55%	55%	18%	16%	82%	83%
Lawson	2%	3%	11%	13%	32%	28%	55%	55%	13%	16%	87%	83%
Oak Grove	0%	3%	14%	13%	41%	28%	45%	55%	14%	16%	86%	83%
Oakbrooke	5%	3%	15%	13%	36%	28%	44%	55%	20%	16%	80%	83%
Pine Forest	0%	3%	6%	13%	33%	28%	61%	55%	6%	16%	94%	83%
Pinewood	9%	3%	22%	13%	42%	28%	27%	55%	31%	16%	69%	83%
Robinson	0%	3%	19%	13%	35%	28%	46%	55%	19%	16%	81%	83%
Scott	8%	3%	31%	13%	35%	28%	27%	55%	39%	16%	62%	83%
Sherwood	7%	3%	21%	13%	36%	28%	36%	55%	28%	16%	72%	83%
Sylvan Hills	6%	3%	6%	13%	37%	28%	51%	55%	12%	16%	88%	83%
Taylor	9%	3%	35%	13%	35%	28%	22%	55%	44%	16%	57%	83%
Tolleson	4%	3%	21%	13%	25%	28%	50%	55%	25%	16%	75%	83%

Table 3M3: 3rd Grade Benchmark Mathematics Spring 2011 Gains over 2010

	Below Scores	State Basic Score	State Basic Score	State Proficient Score	State Advanced Score	State Advanced Score	State Advanced Score	State Advanced Score	Not Proficient	State Score	Proficient Advanced	State Score
District	-1%	-1%	-2%	-1%	-6%	-3%	8%	5%	-3%	-2%	2%	2%
Arnold Drive	0%	-1%	-5%	-1%	9%	-3%	9%	5%	-5%	-2%	4%	2%
Baker	0%	-1%	2%	-1%	-3%	-3%	3%	5%	2%	-2%	0%	2%
Bates	-3%	-1%	-18%	-1%	-2%	-3%	22%	5%	-21%	-2%	20%	2%
Bayou Meto	2%	-1%	2%	-1%	-14%	-3%	11%	5%	4%	-2%	-3%	2%
Cato	0%	-1%	5%	-1%	1%	-3%	-8%	5%	5%	-2%	-7%	2%
Chenal	3%	-1%	6%	-1%	-1%	-3%	-9%	5%	9%	-2%	-10%	2%
Clinton	1%	-1%	-4%	-1%	-1%	-3%	4%	5%	-3%	-2%	3%	2%
College Station	-3%	-1%	16%	-1%	3%	-3%	-16%	5%	13%	-2%	-13%	2%
Crystal Hill	1%	-1%	5%	-1%	-6%	-3%	1%	5%	6%	-2%	-5%	2%
Dupree	12%	-1%	8%	-1%	-24%	-3%	4%	5%	20%	-2%	-20%	2%
Harris	8%	-1%	0%	-1%	-7%	-3%	-1%	5%	8%	-2%	-8%	2%
Jacksonville	-3%	-1%	-6%	-1%	5%	-3%	4%	5%	-9%	-2%	9%	2%
Landmark	-4%	-1%	-2%	-1%	-10%	-3%	16%	5%	-6%	-2%	6%	2%
Lawson	0%	-1%	2%	-1%	-3%	-3%	1%	5%	2%	-2%	-2%	2%
Oak Grove	0%	-1%	-3%	-1%	-25%	-3%	28%	5%	-3%	-2%	3%	2%
Oakbrooke	-4%	-1%	5%	-1%	-23%	-3%	22%	5%	1%	-2%	-1%	2%
Pine Forest	2%	-1%	0%	-1%	-10%	-3%	8%	5%	2%	-2%	-2%	2%
Pinewood	-4%	-1%	-15%	-1%	-4%	-3%	23%	5%	-19%	-2%	19%	2%
Robinson	2%	-1%	-7%	-1%	-1%	-3%	5%	5%	-5%	-2%	4%	2%
Scott	2%	-1%	0%	-1%	3%	-3%	-6%	5%	2%	-2%	-3%	2%
Sherwood	-7%	-1%	-9%	-1%	-2%	-3%	17%	5%	-16%	-2%	15%	2%
Sylvan Hills	-4%	-1%	2%	-1%	-7%	-3%	9%	5%	-2%	-2%	2%	2%
Taylor	-9%	-1%	-23%	-1%	-2%	-3%	33%	5%	-32%	-2%	31%	2%
Tolleson	-4%	-1%	-13%	-1%	5%	-3%	12%	5%	-17%	-2%	17%	2%

* Combined Population includes all students tested except those classified as 1st Year LEP.

PULASKI COUNTY SPECIAL SCHOOL DISTRICT: COMBINED POPULATION

Table 3L1: 3rd Grade Benchmark for Literacy Spring 2011

	Below		State		State		State		State		Not Proficient	State		Proficient	State
	Scores	Basic	Score	Basic	Score	Proficient	Score	Advanced	Score	Score		Advanced	Score		
District	11%	10%	15%	14%	30%	33%	45%	43%	26%	24%	75%	76%			
Arnold Drive	5%	10%	5%	14%	24%	33%	67%	43%	10%	24%	91%	76%			
Baker	4%	10%	5%	14%	18%	33%	74%	43%	9%	24%	92%	76%			
Bates	24%	10%	16%	14%	30%	33%	30%	43%	40%	24%	60%	76%			
Bayou Meto	13%	10%	12%	14%	29%	33%	46%	43%	25%	24%	75%	76%			
Cato	7%	10%	5%	14%	49%	33%	40%	43%	12%	24%	89%	76%			
Chenal	3%	10%	9%	14%	26%	33%	61%	43%	12%	24%	87%	76%			
Clinton	8%	10%	10%	14%	25%	33%	58%	43%	18%	24%	83%	76%			
College Station	7%	10%	34%	14%	24%	33%	34%	43%	41%	24%	58%	76%			
Crystal Hill	8%	10%	13%	14%	32%	33%	47%	43%	21%	24%	79%	76%			
Dupree	10%	10%	16%	14%	22%	33%	52%	43%	26%	24%	74%	76%			
Harris	59%	10%	20%	14%	12%	33%	10%	43%	79%	24%	22%	76%			
Jacksonville	18%	10%	18%	14%	45%	33%	18%	43%	36%	24%	63%	76%			
Landmark	10%	10%	17%	14%	40%	33%	33%	43%	27%	24%	73%	76%			
Lawson	9%	10%	20%	14%	29%	33%	42%	43%	29%	24%	71%	76%			
Oak Grove	3%	10%	16%	14%	38%	33%	43%	43%	19%	24%	81%	76%			
Oakbrooke	15%	10%	18%	14%	29%	33%	38%	43%	33%	24%	67%	76%			
Pine Forest	6%	10%	10%	14%	19%	33%	65%	43%	16%	24%	84%	76%			
Pinewood	5%	10%	23%	14%	38%	33%	34%	43%	28%	24%	72%	76%			
Robinson	7%	10%	24%	14%	27%	33%	41%	43%	31%	24%	68%	76%			
Scott	31%	10%	28%	14%	34%	33%	7%	43%	59%	24%	41%	76%			
Sherwood	9%	10%	16%	14%	34%	33%	41%	43%	25%	24%	75%	76%			
Sylvan Hills	8%	10%	15%	14%	30%	33%	47%	43%	23%	24%	77%	76%			
Taylor	5%	10%	14%	14%	48%	33%	33%	43%	19%	24%	81%	76%			
Tolleson	4%	10%	14%	14%	34%	33%	48%	43%	18%	24%	82%	76%			

Table 3L2: 3rd Grade Benchmark for Literacy Spring 2010

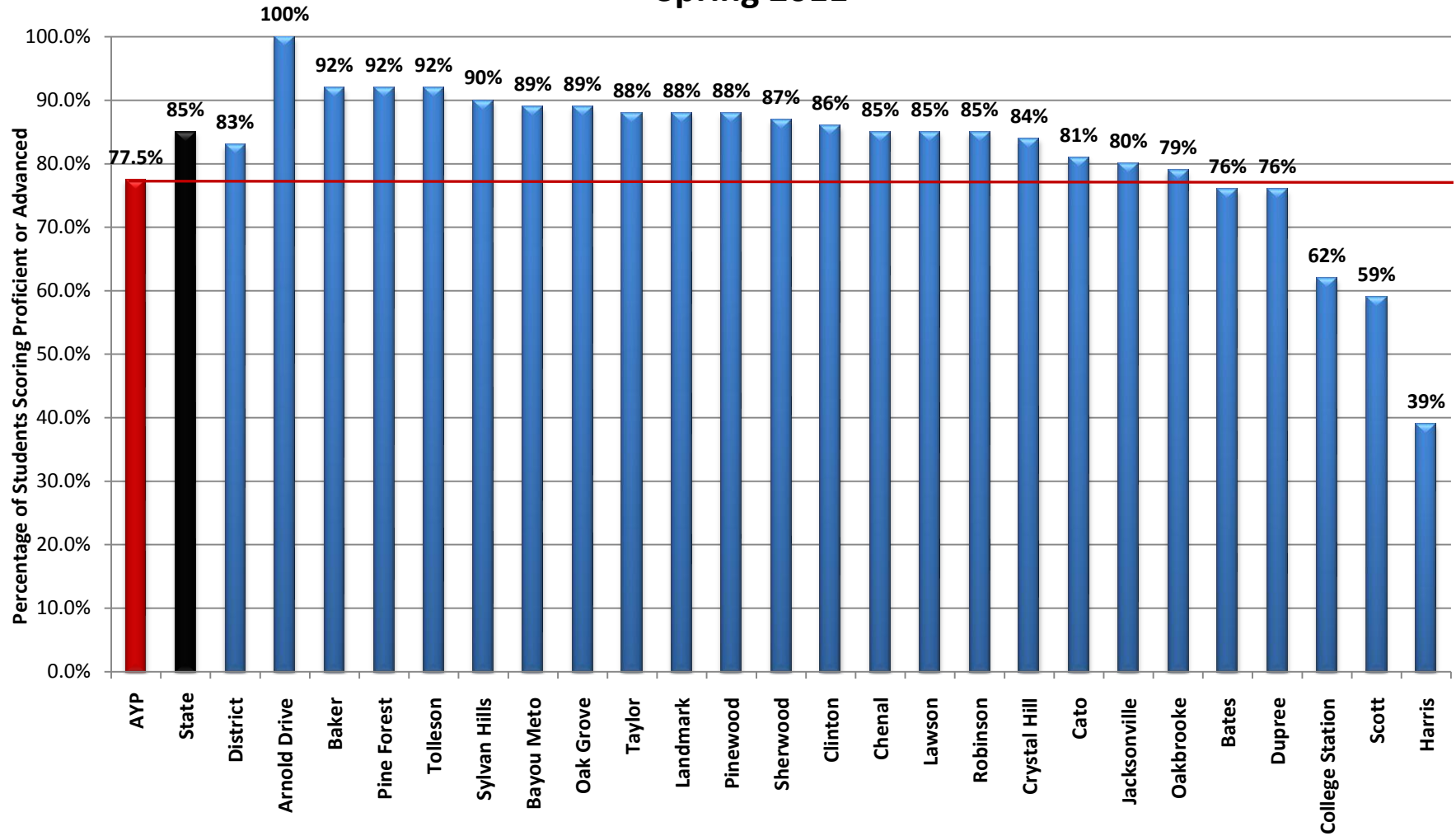
	Below		State		State		State		State		Not Proficient	State		Proficient	State
	Scores	Basic	Score	Basic	Score	Proficient	Score	Advanced	Score	Score		Advanced	Score		
District	14%	12%	20%	17%	31%	34%	35%	37%	34%	29%	66%	71%			
Arnold Drive	0%	12%	14%	17%	14%	34%	73%	37%	14%	29%	87%	71%			
Baker	4%	12%	10%	17%	16%	34%	70%	37%	14%	29%	86%	71%			
Bates	43%	12%	21%	17%	29%	34%	7%	37%	64%	29%	36%	71%			
Bayou Meto	13%	12%	15%	17%	37%	34%	35%	37%	28%	29%	72%	71%			
Cato	4%	12%	23%	17%	46%	34%	27%	37%	27%	29%	73%	71%			
Chenal	2%	12%	9%	17%	26%	34%	63%	37%	11%	29%	89%	71%			
Clinton	13%	12%	19%	17%	28%	34%	41%	37%	32%	29%	69%	71%			
College Station	16%	12%	16%	17%	38%	34%	31%	37%	32%	29%	69%	71%			
Crystal Hill	3%	12%	25%	17%	31%	34%	42%	37%	28%	29%	73%	71%			
Dupree	8%	12%	18%	17%	52%	34%	22%	37%	26%	29%	74%	71%			
Harris	31%	12%	28%	17%	38%	34%	3%	37%	59%	29%	41%	71%			
Jacksonville	25%	12%	32%	17%	29%	34%	13%	37%	57%	29%	42%	71%			
Landmark	13%	12%	21%	17%	23%	34%	43%	37%	34%	29%	66%	71%			
Lawson	17%	12%	19%	17%	32%	34%	32%	37%	36%	29%	64%	71%			
Oak Grove	14%	12%	23%	17%	34%	34%	30%	37%	37%	29%	64%	71%			
Oakbrooke	14%	12%	25%	17%	35%	34%	26%	37%	39%	29%	61%	71%			
Pine Forest	5%	12%	12%	17%	30%	34%	53%	37%	17%	29%	83%	71%			
Pinewood	25%	12%	25%	17%	33%	34%	17%	37%	50%	29%	50%	71%			
Robinson	15%	12%	13%	17%	33%	34%	40%	37%	28%	29%	73%	71%			
Scott	31%	12%	27%	17%	27%	34%	15%	37%	58%	29%	42%	71%			
Sherwood	16%	12%	27%	17%	34%	34%	23%	37%	43%	29%	57%	71%			
Sylvan Hills	11%	12%	14%	17%	25%	34%	49%	37%	25%	29%	74%	71%			
Taylor	23%	12%	25%	17%	35%	34%	17%	37%	48%	29%	52%	71%			
Tolleson	19%	12%	17%	17%	25%	34%	40%	37%	36%	29%	65%	71%			

Table 3L3: 4th Grade Benchmark Literacy Spring 2011 Gains over 2010

	Below		State		State		State		State		Not Proficient	State		Proficient	State
	Scores	Basic	Score	Basic	Score	Proficient	Score	Advanced	Score	Score		Advanced	Score		
District	-3%	-2%	-5%	-3%	-1%	-1%	10%	6%	-8%	-5%	9%	5%			
Arnold Drive	5%	-2%	-9%	-3%	10%	-1%	-6%	6%	-4%	-5%	4%	5%			
Baker	0%	-2%	-5%	-3%	2%	-1%	4%	6%	-5%	-5%	6%	5%			
Bates	-19%	-2%	-5%	-3%	1%	-1%	23%	6%	-24%	-5%	24%	5%			
Bayou Meto	0%	-2%	-3%	-3%	-8%	-1%	11%	6%	-3%	-5%	3%	5%			
Cato	3%	-2%	-18%	-3%	3%	-1%	13%	6%	-15%	-5%	16%	5%			
Chenal	1%	-2%	0%	-3%	0%	-1%	-2%	6%	1%	-5%	-2%	5%			
Clinton	-5%	-2%	-9%	-3%	-3%	-1%	17%	6%	-14%	-5%	14%	5%			
College Station	-9%	-2%	18%	-3%	-14%	-1%	3%	6%	9%	-5%	-11%	5%			
Crystal Hill	5%	-2%	-12%	-3%	1%	-1%	5%	6%	-7%	-5%	6%	5%			
Dupree	2%	-2%	-2%	-3%	-30%	-1%	30%	6%	0%	-5%	0%	5%			
Harris	28%	-2%	-8%	-3%	-26%	-1%	7%	6%	20%	-5%	-19%	5%			
Jacksonville	-7%	-2%	-14%	-3%	16%	-1%	5%	6%	-21%	-5%	21%	5%			
Landmark	-3%	-2%	-4%	-3%	17%	-1%	-10%	6%	-7%	-5%	7%	5%			
Lawson	-8%	-2%	1%	-3%	-3%	-1%	10%	6%	-7%	-5%	7%	5%			
Oak Grove	-11%	-2%	-7%	-3%	4%	-1%	13%	6%	-18%	-5%	17%	5%			
Oakbrooke	1%	-2%	-7%	-3%	-6%	-1%	12%	6%	-6%	-5%	6%	5%			
Pine Forest	1%	-2%	-2%	-3%	-11%	-1%	12%	6%	-1%	-5%	1%	5%			
Pinewood	-20%	-2%	-2%	-3%	5%	-1%	17%	6%	-22%	-5%	22%	5%			
Robinson	-8%	-2%	11%	-3%	-6%	-1%	1%	6%	3%	-5%	-5%	5%			
Scott	0%	-2%	1%	-3%	7%	-1%	-8%	6%	1%	-5%	-1%	5%			
Sherwood	-7%	-2%	-11%	-3%	0%	-1%	18%	6%	-18%	-5%	18%	5%			
Sylvan Hills	-3%	-2%	1%	-3%	5%	-1%	-2%	6%	-2%	-5%	3%	5%			
Taylor	-18%	-2%	-11%	-3%	13%	-1%	16%	6%	-29%	-5%	29%	5%			
Tolleson	-15%	-2%	-3%	-3%	9%	-1%	8%	6%	-18%	-5%	17%	5%			

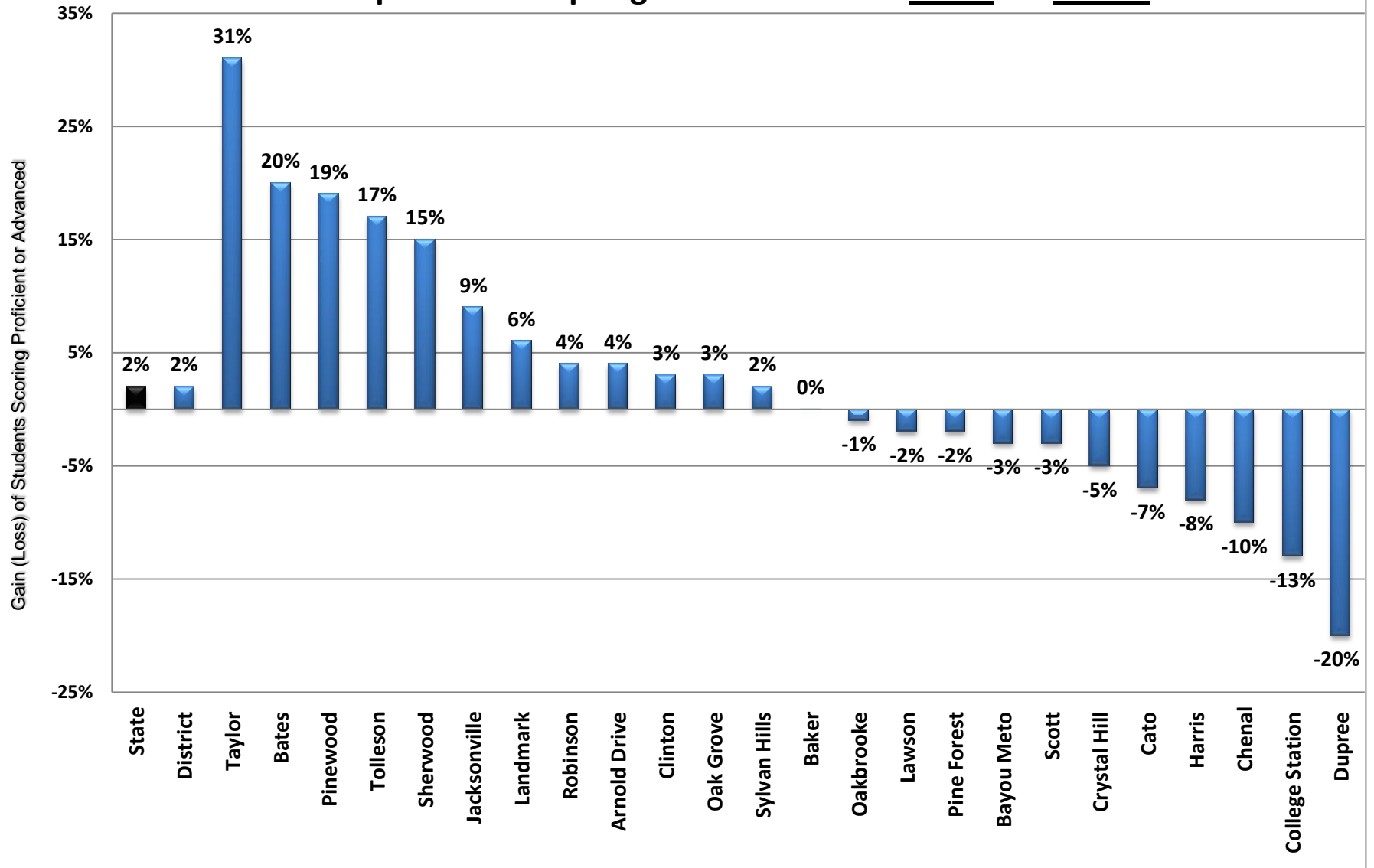
* Combined Population includes all students tested except those classified as 1st Year LEP.

PCSSD Comparisons of Students Scoring Proficient or Advanced 3rd Grade Mathematics Combined Population Spring 2011



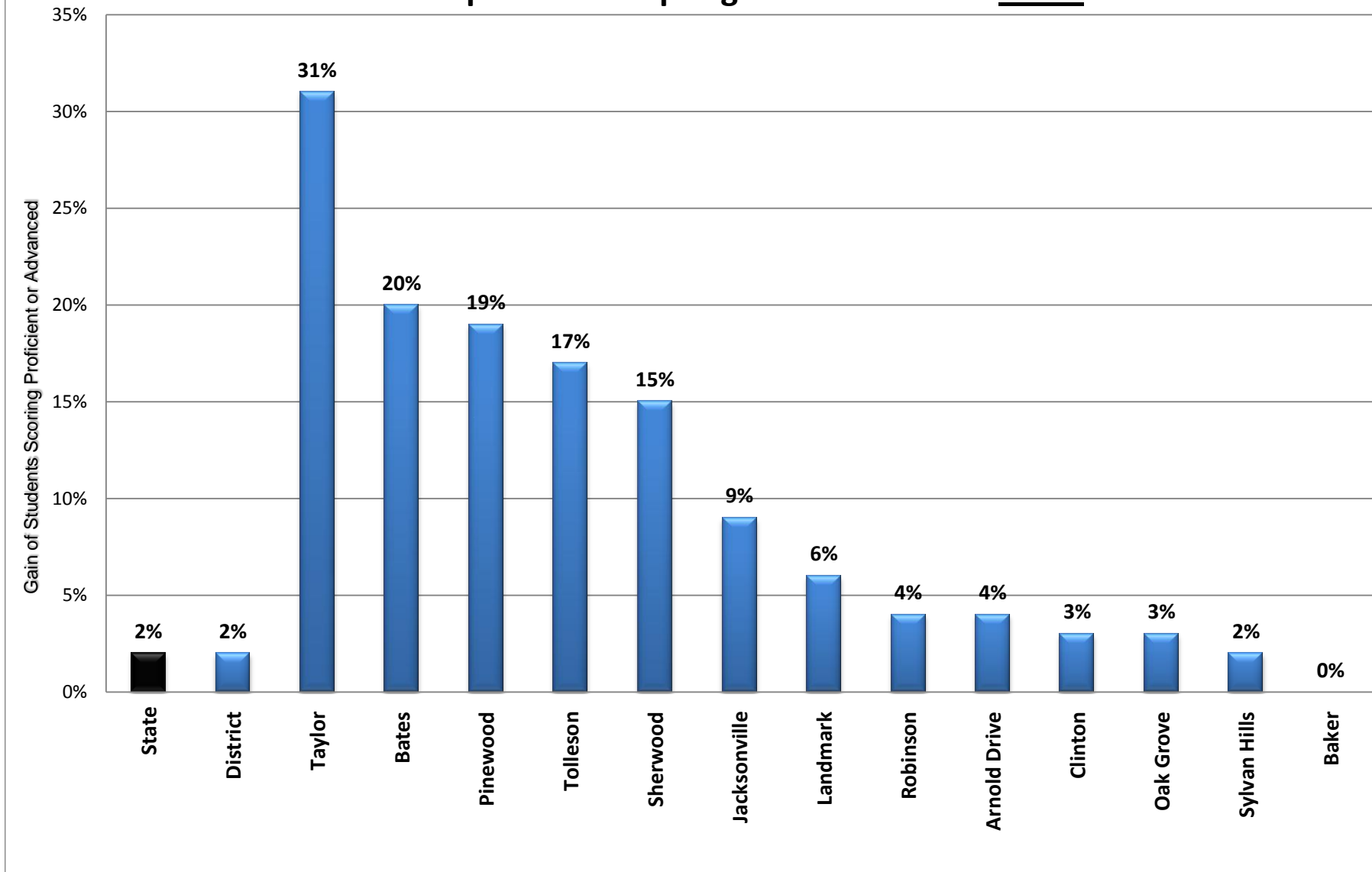
* Combined Population includes all students tested except those classified as 1st Year LEP.

PCSSD Gains/Losses of Students Scoring Proficient or Advanced 3rd Grade Mathematics Combined Population Comparisons of Spring 2011 over 2010: Gains vs. Losses



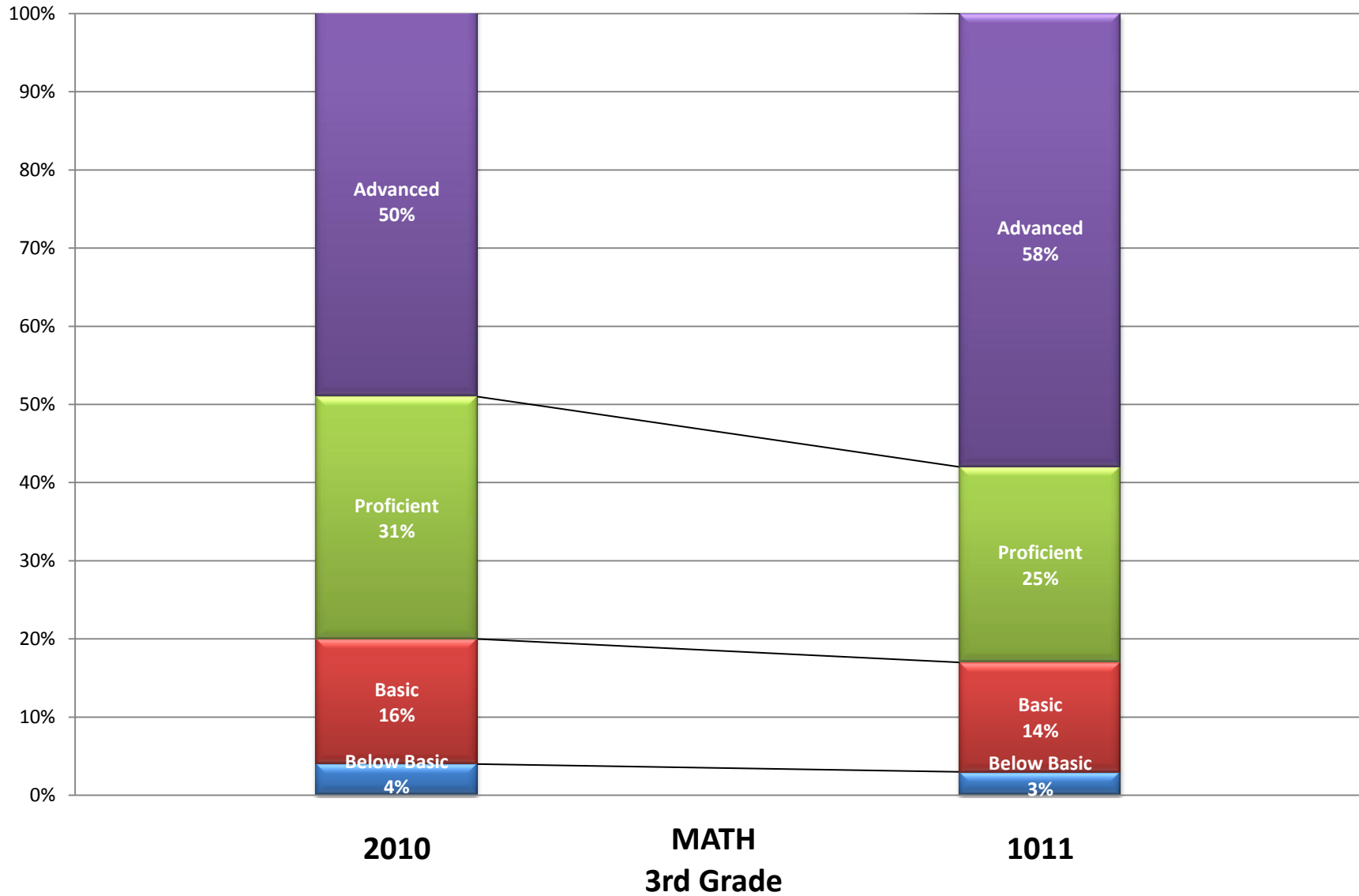
* Combined Population includes all students tested except those classified as 1st Year LEP.

PCSSD Gains of Students Scoring Proficient or Advanced 3rd Grade Mathematics Combined Population Comparisons of Spring 2011 over 2010: Gains



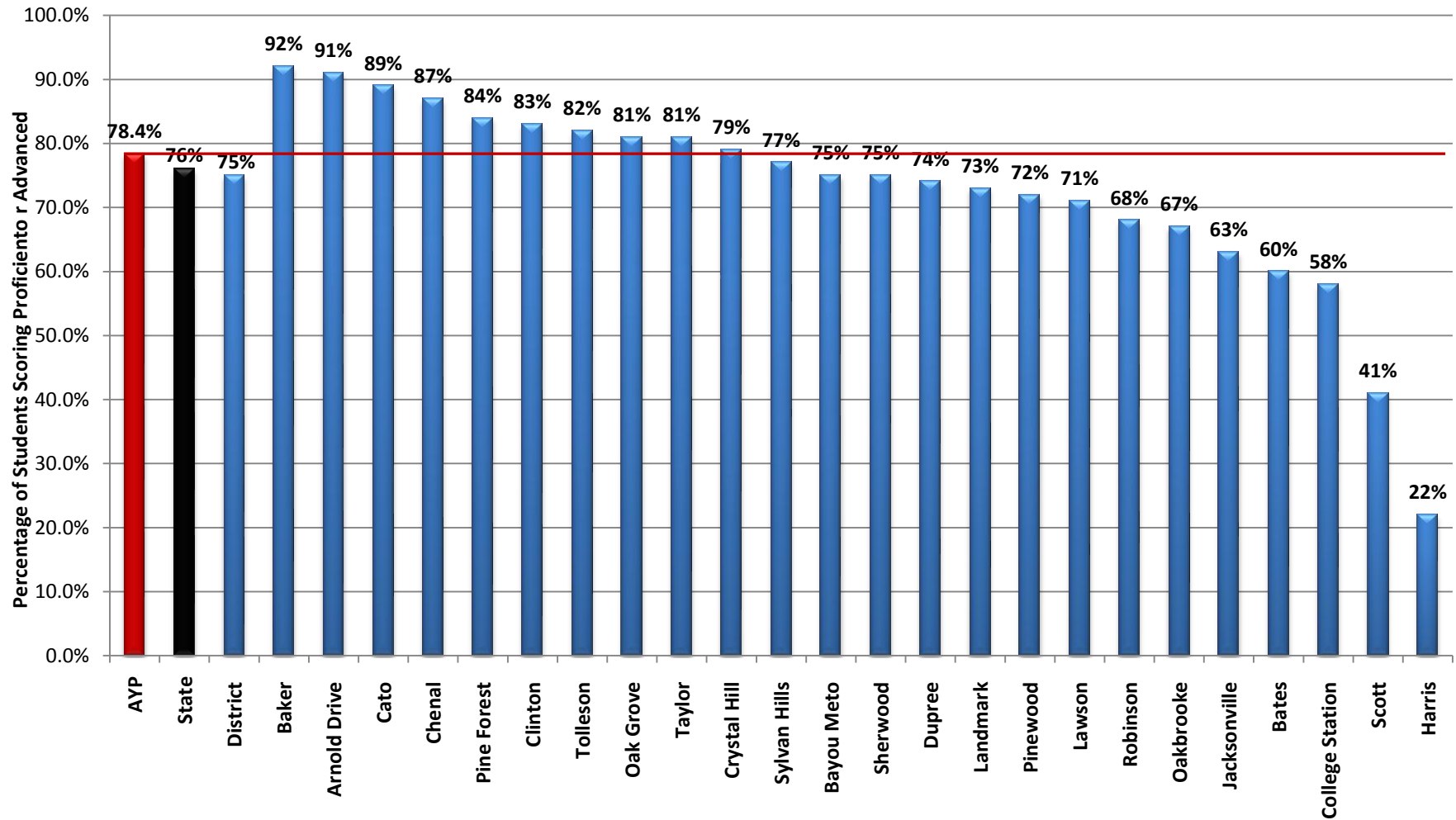
* Combined Population includes all students tested except those classified as 1st Year LEP.

**PCSSD Comparison of Reduction in Percentage of Students Scoring Basic or Below and Increase in Percentage of Students Scoring Proficient or Advanced
Combined Population Benchmark Exams Spring 2011 Compared to Spring 2010**



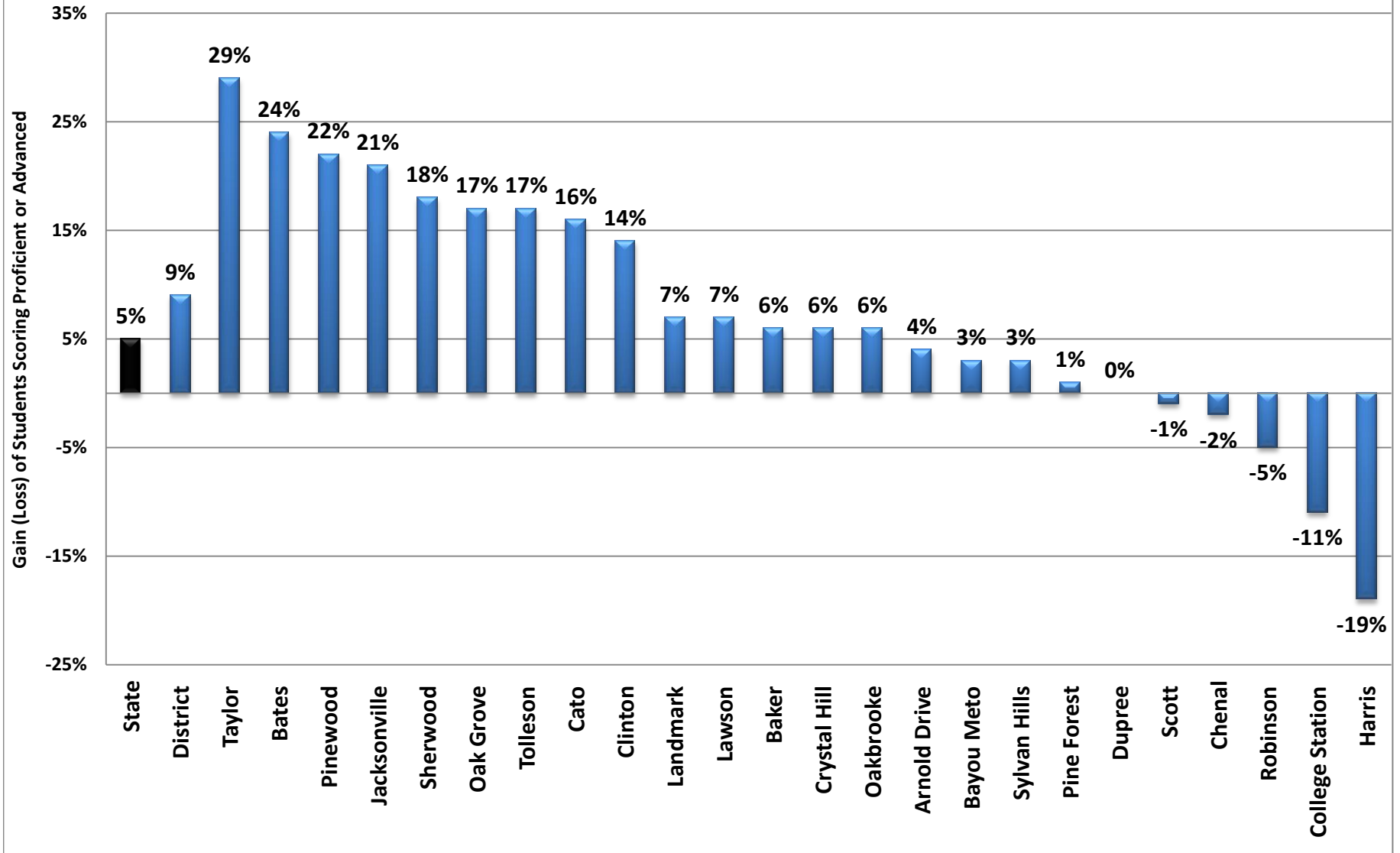
* Combined Population includes all students tested except those classified as 1st Year LEP.

PCSSD Comparisons of Students Scoring Proficient or Advanced 3rd Grade Literacy Combined Population Spring 2011



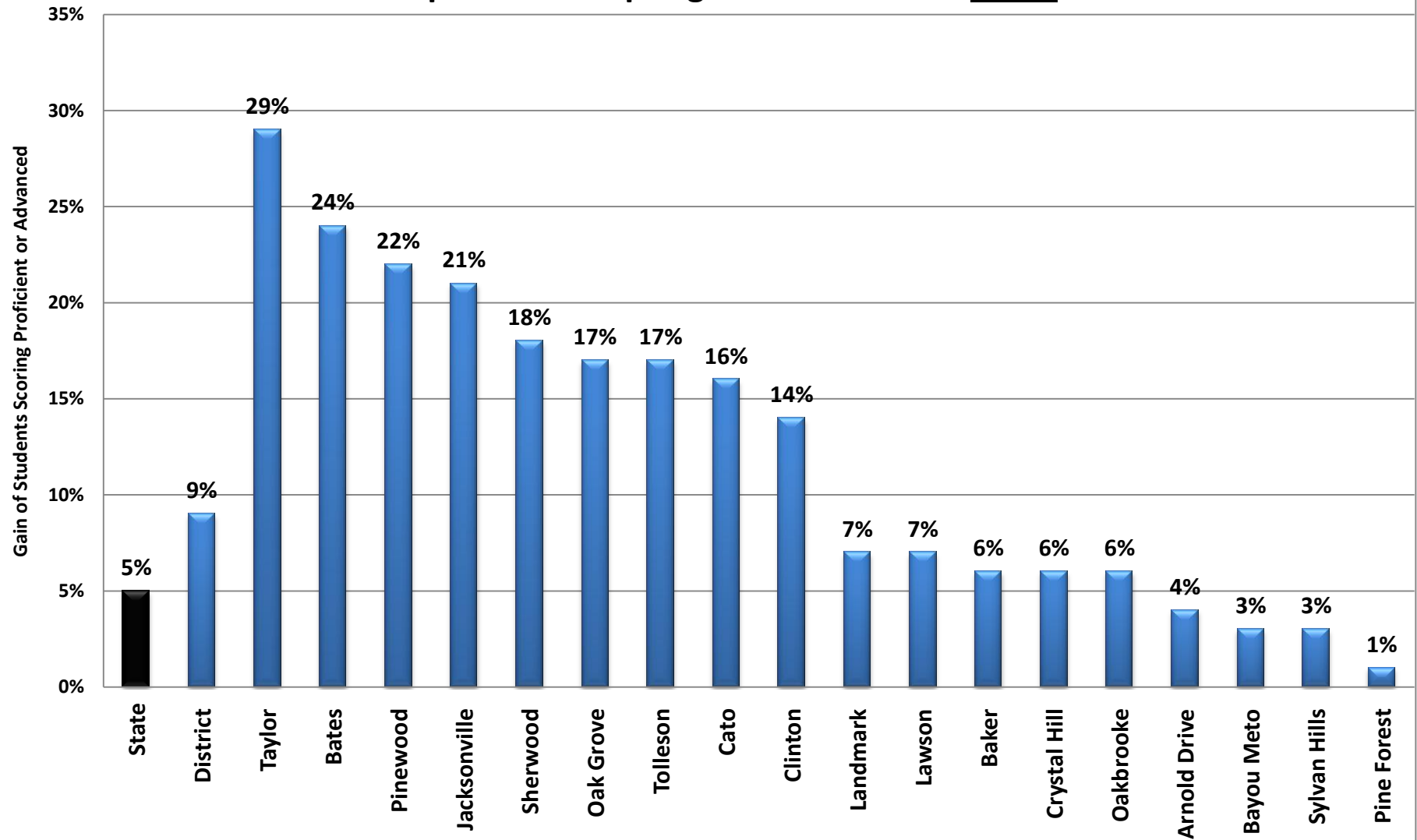
* Combined Population includes all students tested except those classified as 1st Year LEP.

PCSSD Gains/Losses of Students Scoring Proficient or Advanced 3rd Grade Literacy Combined Population Comparisons of Spring 2011 over 2010: Gains vs. Losses



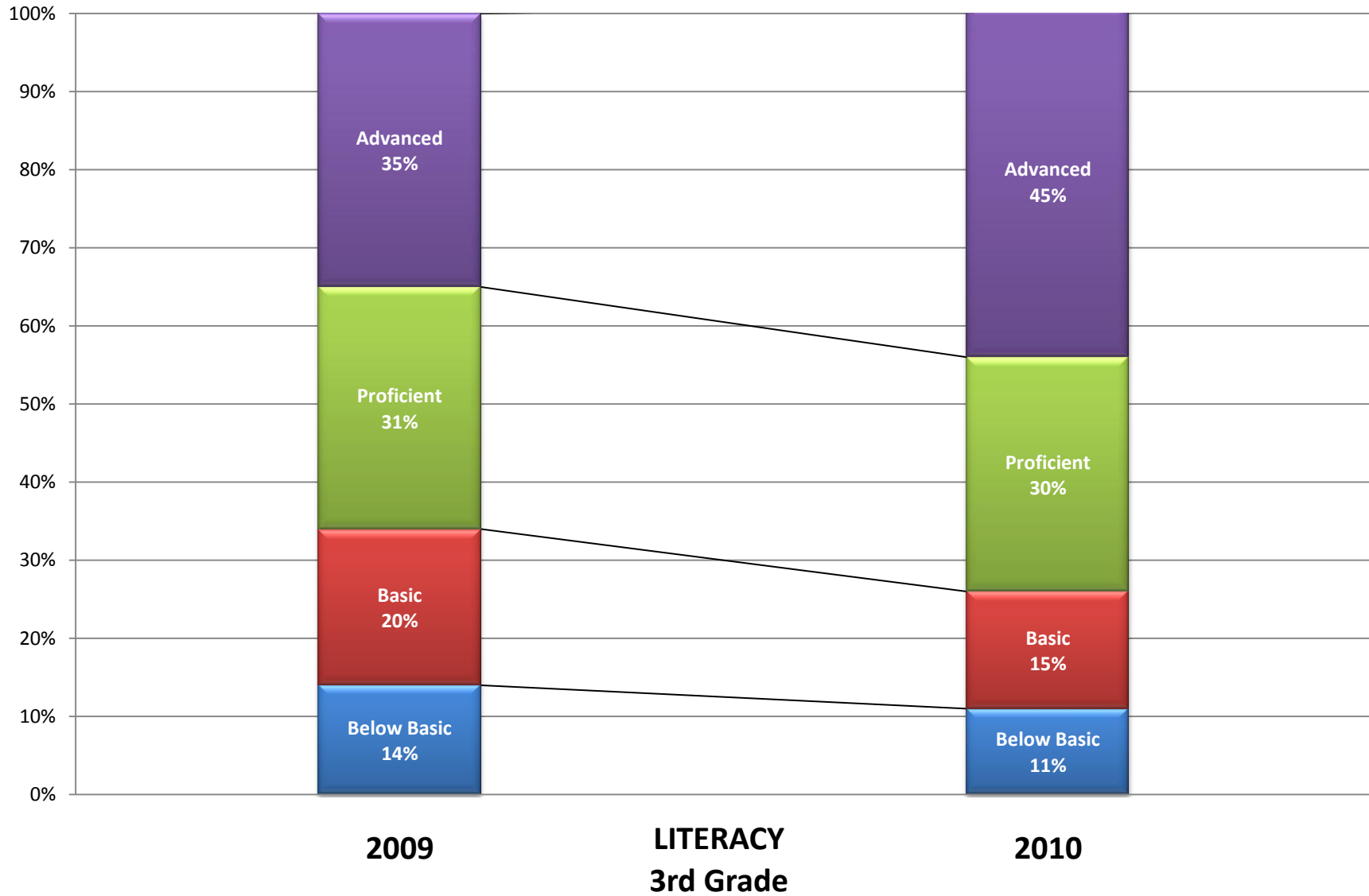
* Combined Population includes all students tested except those classified as 1st Year LEP.

PCSSD Gain of Students Scoring Proficient or Advanced 3rd Grade Literacy Combined Population Comparisons of Spring 2011 over 2010: Gains



* Combined Population includes all students tested except those classified as 1st Year LEP.

**PCSSD Comparison of Reduction in Percentage of Students Scoring Basic or Below and Increase in Percentage of Students Scoring Proficient or Advanced
Combined Population Benchmark Exams Spring 2011 Compared to Spring 2011**



* Combined Population includes all students tested except those classified as 1st Year LEP.